

Announcements

- **Church Office** — closed Monday
- **Wednesday Night Activities** — final regular activities are this week
- **Christmas Project** — Christmas boxes for Pakistani families — donations will be collected through today
- **Guatemala Mission Trip** — deadline for application and deposit is December 2
- **Christmas Banquet** — **Friday**, December 7 — 6:30 pm in the Sanctuary — for all adults and youth (those 7th-12th grades) — sign up for attendance and food at the back table
- **Children's Christmas Party**— Friday, December 7 — 6:15 pm — Infants-K-5 at Grace — 1st-6th grades at the Belk Center (Bower's Park) — sign up for attendance at the back table

*For further details on these and other announcements,
please see the Friday Email.*

Prayer Needs

- **Malia**, infant niece of Paul Norton, is in PICU at a Mobile hospital with complications from RSV.
- **Reed Pate**, 17-month-old grandson of Carla and Rusty Gray, is home recovering from surgery to remove a brain tumor.
- **Sam Richey** is slowly recovering from pacemaker surgery.
- **Dan Young** is recovering at home from back surgery.

Church Office Phone: (205) 462-1144

E-mail: gracechurch@gracechurchtuscaloosa.com

Website: www.gracechurchtuscaloosa.com



WORSHIP GUIDE

grace NOVEMBER 25, 2018
church

WORSHIPERS IN COMMUNITY, ENGAGED IN MINISTRY

Order of Worship

Pre-Service Song

WelcomeTim Wilson

Call to Worship..... Psalm 40:1-3

Worship Through Singing.....“Everlasting God”
“Stronger”
“In Christ Alone”

Lord’s Supper.....Jeremy Henderson, *Elder*
Galatians 4:4-5

Worship Through Giving

Kids Catechism.....Jim Gleason

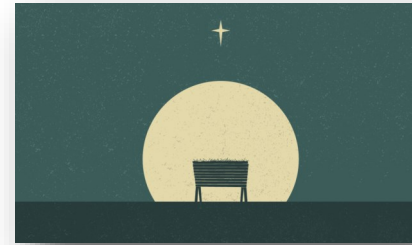
Children K-4 through 1st grade dismissed for Children’s Church

Sermon Ben Talmadge

Worship Through Singing.....“O Come to the Altar”
“Jesus”

Benediction.....Isaiah 40:28-31

Sermon Notes



“The God of All Comfort”

Luke 2:25-35

Ben Talmadge, *Senior Pastor*

1. Comfort in _____
2. Comfort in _____
3. Comfort in _____
4. Comfort in _____

Grace Church Staff

Ben Talmadge, Senior Pastor

Tim Thomassian, Associate Pastor

Nita Hallman, Administrative Assistant

Tim Wilson, Youth Director

Shannon Gray, Children’s & Women’s Ministry Director

Leslie Hoyle, Music Director